

Other Fittings



Other Fittings

Adapters

X17MW.....	5511	86
X17MP.....	5512	86
17C.....	5513	87
17D.....	5514	87
17E.....	5515	87

Elbows

2SXL-90.....	5509	85
2SXL-45.....	5510	85

SPECIFICATIONS....

Size Range: 1/2" OD through 6" OD

Materials: T304, T316L

Surface Finish: Mechanically Polished. Internal 20Ra (0.51µm), External 32Ra (0.8µm)

Removal from the system is not required
EACH FITTINGS PACKAGING HAS A BARCODE

Other Fittings

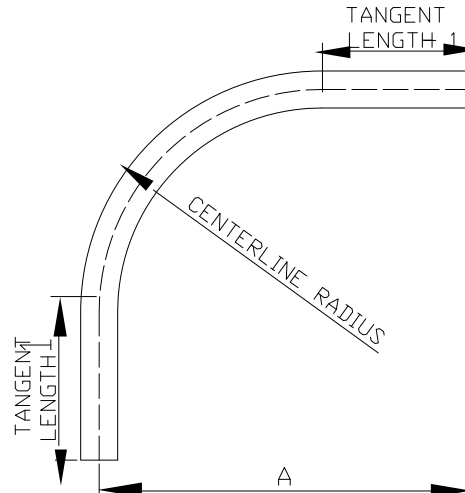
Part for ASTM A270 tubes

Finish: OD: Semi bright. ID: Mirror
Connections: Welding ends



1.1

2SXL-90 Degree Sweep Elbow

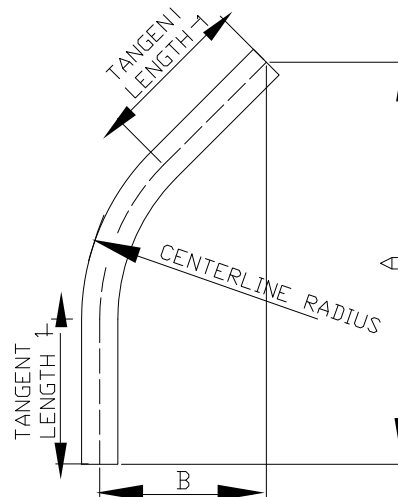


Basic Ordering Number: 5509

NO.	Size	Centerline Radius		A		Tangent 1	
		inch	mm	inch	mm	inch	mm
5509 1520	1.5"-2"	12	304.8	20	508	8	203.2
5509 1530	1.5"-3"	18	457.2	26	660.4	8	203.2
5509 1561	1.5"-6"	24	609.6	32	812.8	8	203.2
5509 1562	1.5"-6"	36	914.4	44	1117.6	8	203.2
5509 1563	1.5"-6"	48	1219.2	56	1422.4	8	203.2

**T304 and T316L are available.

2SXL-45 Degree Sweep Elbow



Basic Ordering Number: 5510

NO.	Size	Centerline Radius		A		B		Tangent 1	
		inch	mm	inch	mm	inch	mm	inch	mm
5510 1520	1.5"-2"	12	304.8	22.142	562.4	9.172	233.0	8	203.2
5510 1530	1.5"-3"	18	457.2	26.388	670.3	10.929	277.6	8	203.2
5510 1561	1.5"-6"	24	609.6	30.627	777.9	12.686	322.2	8	203.2
5510 1562	1.5"-6"	36	914.4	39.113	993.5	16.201	411.5	8	203.2
5510 1563	1.5"-6"	48	1219.2	47.598	1209.0	19.716	500.8	8	203.2

**T304 and T316L are available.

**All measurements are in millimeters (mm)
Conversion to inches, 25.4mm=1inch

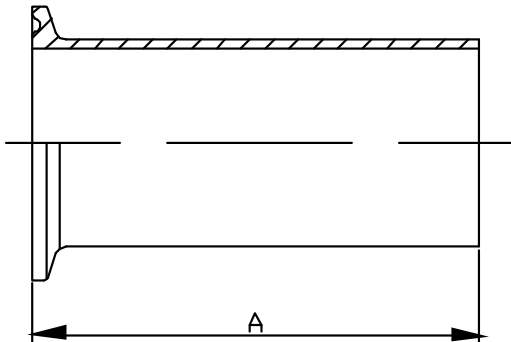
Other Fittings

Part for ASTM A270 tubes

Finish: OD: Semi bright. ID: Mirror
Connections: Welding ends



X17MW Weld x Clamp

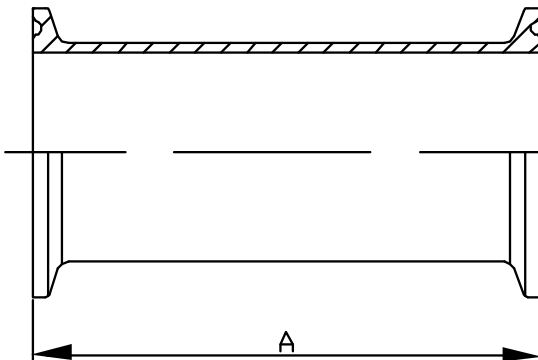


Basic Ordering Number: 5511

NO.	Size	A(Minimum Length)	
		inch	mm
5511 0050	0.5"	0.5	12.7
5511 0075	0.75"	0.5	12.7
5511 0100	1"	0.5	12.7
5511 0150	1.5"	0.5	12.7
5511 0200	2"	0.5	12.7
5511 0250	2.5"	0.5	12.7
5511 0300	3"	0.5	12.7
5511 0400	4"	0.625	15.875
5511 0600	6"	0.725	18.415

**T304 and T316L are available.

X17MP Clamp x Clamp



Basic Ordering Number: 5512

NO.	Size	A(Minimum Length)	
		inch	mm
5512 0050	0.5"	1.125	28.575
5512 0075	0.75"	1.125	28.575
5512 0100	1"	1.125	28.575
5512 0150	1.5"	1.125	28.575
5512 0200	2"	1.125	28.575
5512 0250	2.5"	1.125	28.575
5512 0300	3"	1.125	28.575
5512 0400	4"	1.25	31.75
5512 0600	6"	1.5	38.1

**T304 and T316L are available.

NOTE! Treatment: Annealed.

**All measurements are in millimeters (mm)
Conversion to inches, 25.4mm=1inch

Other Fittings

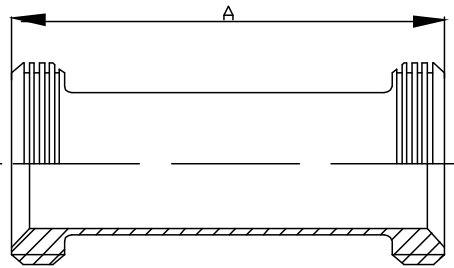
Part for ASTM A270 tubes

Finish: OD: Semi bright. ID: Mirror
Connections: Welding ends



1.1

17C
Acme Thread x Acme Thread

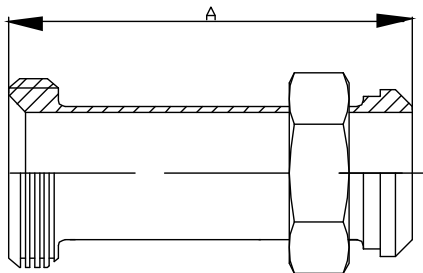


Basic Ordering Number: 5513

NO.	Size	A(Minimum Length)	
		inch	mm
5513 0100	1"	1.375	34.9
5513 0150	1.5"	1.438	36.5
5513 0200	2"	1.438	36.5
5513 0250	2.5"	1.688	42.9
5513 0300	3"	1.813	46.1
5513 0400	4"	2.438	61.9

**T304 and T316L are available.

17D
Acme Thread x Bevel Seat

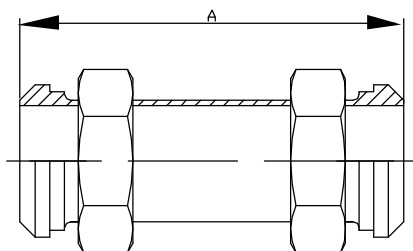


Basic Ordering Number: 5514

NO.	Size	A(Minimum Length)	
		inch	mm
5514 0100	1"	2.875	73.0
5514 0150	1.5"	3.125	79.4
5514 0200	2"	3.375	85.7
5514 0250	2.5"	3.75	95.3
5514 0300	3"	3.875	98.4
5514 0400	4"	4.625	117.5

**T304 and T316L are available.

17E
Bevel Seat x Bevel Seat



Basic Ordering Number: 5515

NO.	Size	A(Minimum Length)	
		inch	mm
5515 0100	1"	2.875	73.0
5515 0150	1.5"	3.125	79.4
5515 0200	2"	3.375	85.7
5515 0250	2.5"	3.75	95.3
5515 0300	3"	3.875	98.4
5515 0400	4"	4.625	117.5

**T304 and T316L are available.

**All measurements are in millimeters (mm)
Conversion to inches, 25.4mm=1inch